

ENGINE	792D LC
Type	John Deere 6076A with altitude-compensating turbocharger
Rated power	165 SAE net hp (123 kW) / 173 SAE gross hp (129 kW) @ 2,100 rpm
Cylinders.....	6
Displacement	466 cu. in. (7.63 L)
Maximum net torque	604 lb.-ft. (820 Nm) @ 1,350 rpm
Fuel consumption, typical.....	3 to 8 gal./hr. (11.4 to 30.3 L/h)
Cooling fan	suction type
Electrical system	24 volt with 45-amp alternator
Batteries (two 12 volt)	reserve capacity: 180 min.

HYDRAULIC SYSTEM	
Main pumps.....	2 variable-displacement axial-piston open center
Maximum rated flow	2 x 69.2 gpm (2 x 262 L/min.)
Pressure setting	4,050 psi (27 924 kPa)
Pilot pump	one gear
Maximum rated flow	9.3 gpm (353 L/min.)
Pressure setting	570 psi (3930 kPa)
System operating pressure	
Travel circuits.....	4,980 psi (34 336 kPa)
Implement circuits.....	4,050 psi (27 924 kPa)
Swing circuit	4,050 psi (27 924 kPa)
Oil filtration.....	one 10-micron full-flow return filter with by-pass one suction filter one pilot filter

CYLINDERS	
Boom (2)	
Bore	5.71 in. (145 mm)
Rod diameter.....	3.74 in. (95 mm)
Stroke	53.54 in. (1360 mm)
Arm (1)	
Bore	5.91 in. (150 mm)
Rod diameter.....	4.13 in. (105 mm)
Stroke	70.28 in. (1785 mm)
Bucket (1)	
Bore	5.71 in. (145 mm)
Rod diameter.....	3.74 in. (95 mm)
Stroke	42.52 in. (1080 mm)

SWING MECHANISM	
Swing speed	0-12 rpm
Swing torque.....	56,824 lb.-ft. (7848 kg-m)

UNDERCARRIAGE	
Carrier rollers (per side)	2
Track rollers (per side)	9
Idlers (per side)	1
Shoes, triple semi-grouser (per side).....	50
Track guides.....	front and center
Track adjustment.....	hydraulic
Travel speed	
Low	0-2.3 mph (0-3.7 km/h)
High	0-2.9 mph (0-4.6 km/h)
Drawbar pull	44,000 lb. (196 kN)
Tractive gradability.....	107% (47 deg.)
Off-level operating limit for oil sump.....	100% (45 deg.)

GROUND PRESSURE DATA	
Average ground pressure	
24-in. (600 mm) triple semi-grouser shoes.....	7.14 psi (49.2 kPa); recommended for rocky terrain and stumps
32-in. (800 mm) triple semi-grouser shoes.....	5.54 psi (38.2 kPa); recommended for general/soft terrain

CAPACITIES

792D LC

Fuel tank	82 gal. (310 L)
Cooling system	30 qt. (29 L)
Engine lubrication, including filter	25.4 qt. (24 L)
Hydraulic system	79 gal. (300 L)
Hydraulic reservoir	36 gal. (136 L)
Planetary propel drive (each)	6.3 qt. (6 L)
Swing drive	10 qt. (9.5 L)

OPERATING WEIGHT

With full fuel tank; 175-lb. (79 kg) operator; 32-in. (800 mm) triple grouser shoes; 12-ft. 4-in. (3.75 m) arm; 42-in. (1065 mm) 1.75 cu. yd. (1.34 m³) general-purpose bucket; and 11,685-lb. (5300 kg) counterweight60,250 lb. (27 329 kg)

COMPONENT WEIGHTS

Upperstructure with full fuel tank (less all front attachments, 11,685-lb. [5300 kg] counterweight, and boom cylinders [2])12,880 lb. (5842 kg)

Undercarriage equipped with

24-in. (600 mm) triple grouser shoes22,178 lb. (10 060 kg)

32-in. (800 mm) triple grouser shoes24,228 lb. (10 990 kg)

One-piece boom (with arm cylinder).....4,753 lb. (2156 kg)

Arm with bucket cylinder and linkage

10 ft. 2 in. (3.10 m).....2,994 lb. (1358 kg)

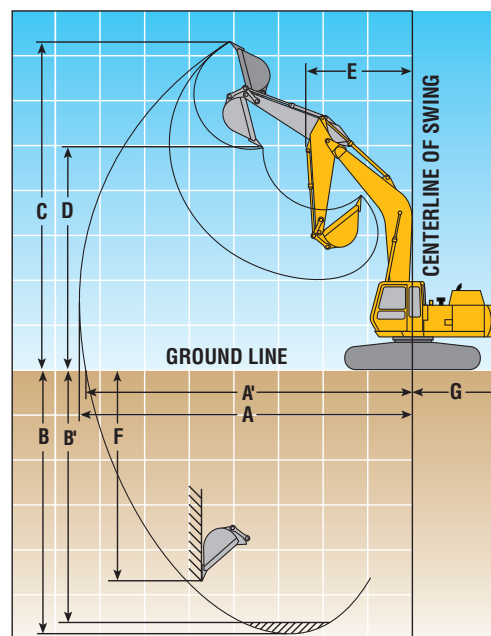
12 ft. 4 in. (3.75 m).....3,278 lb. (1487 kg)

Boom lift cylinders (2) total weight1,285 lb. (583 kg)

42-in. (1065 mm) 1.75 cu. yd. (1.34 m³) general-purpose bucket.....1,966 lb. (891 kg)

OPERATING INFORMATION

	<i>Arm Length 10 ft. 2 in. (3.10 m)</i>	<i>Arm Length 12 ft. 4 in. (3.75 m)</i>
Arm force with 42-in. (1065 mm) 1.75 cu. yd. (1.34 m ³) general-purpose bucket	24,700 lb. (110 kN)	21,600 lb. (96 kN)
Bucket force with 42-in. (1065 mm) 1.75 cu. yd. (1.34 m ³) general-purpose bucket	33,500 lb. (149 kN)	33,500 lb. (149 kN)
Lifting capacity over front @ ground level 20-ft. (6.1 m) reach.....	18,505 lb. (8394 kg)	17,393 lb. (7889 kg)
A Maximum reach	35 ft. 2 in. (10.71 m)	37 ft. 2 in. (11.32 m)
A' Maximum reach @ ground level	34 ft. 6 in. (10.52 m)	36 ft. 7 in. (11.15 m)
B Maximum digging depth	23 ft. 9 in. (7.23 m)	27 ft. 10 in. (7.87 m)
B' Maximum digging depth @ 8-ft. (2.44 m) flat bottom.....	23 ft. 2 in. (7.05 m)	25 ft. 4 in. (7.73 m)
C Maximum cutting height.....	32 ft. 5 in. (9.88 m)	33 ft. 4 in. (10.17 m)
D Maximum dumping height	22 ft. 11 in. (6.98 m)	24 ft. 1 in. (7.33 m)
E Minimum swing radius	13 ft. 8 in. (4.16 m)	13 ft. 7 in. (4.15 m)
F Maximum vertical wall	20 ft. 0 in. (6.10 m)	22 ft. 1 in. (6.74 m)
G Tail swing radius	9 ft. 11 in. (3.03 m)	9 ft. 11 in. (3.03 m)

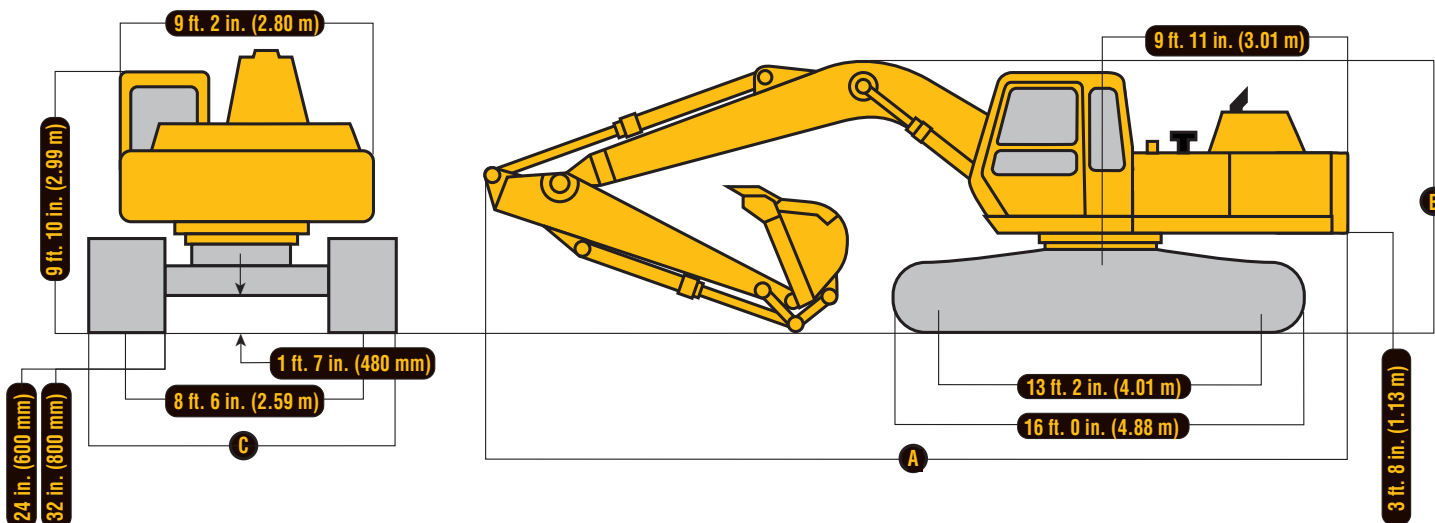


DIMENSIONS

792D LC

Note: Track-shoe lug height not included.

- A** With 10 ft. 2 in. (3.10 m) arm34 ft. 3 in. (10.45 m)
With 12 ft. 4 in. (3.75 m) arm34 ft. 5 in. (10.47 m)
- B** With 10 ft. 2 in. (3.10 m) arm10 ft. 5 in. (3.17 m)
With 12 ft. 4 in. (3.75 m) arm10 ft. 8 in. (3.25 m)
- C** With 24-in. (600 mm) shoes10 ft. 6 in. (3.19 m)
With 32-in. (800 mm) shoes11 ft. 1 in. (3.39 m)



LIFT CAPACITIES

Boldface italic type indicates hydraulic-limited capacities; lightface type indicates stability-limited capacities, in lb. (kg). Ratings at bucket lift hook, machine equipped with 1.75-cu. yd. (1.34 m³) 42-in. (1065 mm) wide, 1,966-lb. (891 kg) bucket; and situated on firm, uniform supporting surface. Total load includes weight of cables, hook, etc. Figures do not exceed 87 percent of hydraulic capacities or 75 percent of weight needed to tip machine.

Load Point Height	10 ft. (3.05 m)		15 ft. (4.57 m)		20 ft. (6.10 m)		25 ft. (7.62 m)		30 ft. (9.14 m)	
	Over Front	Over Side	Over Front	Over Side	Over Front	Over Side	Over Front	Over Side	Over Front	Over Side
<i>With 24-in. (600 mm) shoes and 10-ft. 2-in. (3.10 m) arm</i>										
20 ft. (6.10 m)							8,446 (3831)	8,446 (3831)		
15 ft. (4.57 m)							9,331 (4233)	9,331 (4233)	8,257 (3745)	6,647 (3015)
10 ft. (3.05 m)			18,085 (8203)	18,085 (8203)	12,975 (5885)	12,975 (5885)	10,876 (4933)	9,025 (4094)	9,954 (4515)	6,448 (2925)
5 ft. (1.52 m)			23,129 (10 491)	18,654 (8461)	16,163 (7331)	12,172 (5521)	12,623 (5726)	8,532 (3870)	10,589 (4803)	6,199 (2812)
Ground Line			21,002 (9527)	17,935 (8135)	18,505 (8394)	11,543 (5236)	13,938 (6322)	8,143 (3694)	10,363 (4700)	5,991 (2718)
-5 ft. (-1.52 m)	10,637 (4825)	10,637 (4825)	22,764 (10 326)	17,827 (8086)	19,621 (8900)	11,264 (5109)	13,702 (6215)	7,930 (3597)	10,261 (4654)	5,897 (2675)
-10 ft. (-3.05 m)	21,885 (9927)	21,885 (9927)	26,415 (11 982)	17,992 (8161)	19,486 (8839)	11,263 (5109)	13,693 (6211)	7,922 (3593)		
-15 ft. (-4.57 m)	22,700 (10 297)	22,700 (10 297)	23,663 (10 734)	18,418 (8354)	17,741 (8047)	11,531 (5230)				
<i>With 32-in. (800 mm) shoes and 10-ft. 2-in. (3.10 m) arm</i>										
20 ft. (6.10 m)							8,446 (3831)	8,446 (3831)		
15 ft. (4.57 m)							9,331 (4233)	9,331 (4233)	8,257 (3745)	6,915 (3137)
10 ft. (3.05 m)			18,085 (8203)	18,085 (8203)	12,975 (5885)	12,975 (5885)	10,876 (4933)	9,359 (4245)	9,954 (4515)	6,717 (3047)
5 ft. (1.52 m)			23,129 (10 491)	19,308 (8758)	16,163 (7331)	12,615 (5722)	12,623 (5726)	8,866 (4022)	10,866 (4929)	6,468 (2934)
Ground Line			21,002 (9527)	18,589 (8432)	18,505 (8394)	11,985 (5436)	14,113 (6402)	8,477 (3845)	10,792 (4895)	6,260 (2840)
-5 ft. (-1.52 m)	10,637 (4825)	10,637 (4825)	22,764 (10 326)	18,481 (8383)	19,621 (8900)	11,706 (5310)	14,247 (6462)	8,264 (3749)	10,690 (4849)	6,166 (2797)
-10 ft. (-3.05 m)	21,885 (9927)	21,885 (9927)	26,415 (11 982)	18,646 (8458)	19,486 (8839)	11,705 (5309)	14,238 (6458)	8,256 (3745)		
-15 ft. (-4.57 m)	22,700 (10 297)	22,700 (10 297)	23,663 (10 734)	19,072 (8651)	17,741 (8047)	11,974 (5431)				
<i>With 24-in. (600 mm) shoes and 12-ft. 4-in. (3.75 m) arm</i>										
20 ft. (6.10 m)									6,179 (2803)	6,179 (2803)
15 ft. (4.57 m)							8,058 (3655)	8,058 (3655)	8,124 (3685)	6,739 (3057)
10 ft. (3.05 m)			14,710 (6672)	14,710 (6672)	11,244 (5100)	11,244 (5100)	9,691 (4396)	9,133 (4143)	8,954 (4062)	6,480 (2939)
5 ft. (1.52 m)			21,610 (9802)	19,213 (8715)	14,628 (6635)	12,353 (5603)	11,577 (5251)	8,575 (3890)	10,018 (4544)	6,178 (2802)
Ground Line			25,775 (11 691)	17,974 (8153)	17,393 (7889)	11,562 (5245)	13,288 (6027)	8,104 (3676)	10,293 (4669)	5,910 (2681)
-5 ft. (-1.52 m)	11,419 (5180)	11,419 (5180)	27,211 (12 343)	17,580 (7974)	19,028 (8631)	11,134 (5050)	13,584 (6162)	7,804 (3540)	10,108 (4585)	5,739 (2603)
-10 ft. (-3.05 m)	21,173 (9604)	21,173 (9604)	26,926 (12 214)	17,603 (7985)	19,437 (8817)	11,018 (4998)	13,473 (6111)	7,703 (3494)	10,099 (4581)	5,731 (2600)
-15 ft. (-4.57 m)	23,883 (10 833)	23,883 (10 833)	25,044 (11 360)	17,921 (8129)	18,510 (8396)	11,172 (5068)	13,627 (6181)	7,842 (3557)		
-20 ft. (-6.10 m)	28,705 (13 020)	28,705 (13 020)	20,713 (9395)	18,597 (8436)	15,119 (6858)	11,682 (5299)				

LIFT CAPACITIES (continued)

Load Point Height	10 ft. (3.05 m)		15 ft. (4.57 m)		20 ft. (6.10 m)		25 ft. (7.62 m)		30 ft. (9.14 m)		
	Over Front	Over Side	Over Front	Over Side	Over Front	Over Side	Over Front	Over Side	Over Front	Over Side	
<i>With 32-in. (800 mm) shoes and 12-ft. 4-in. (3.75 m) arm</i>											
20 ft. (6.10 m)										6,179 (2803)	6,179 (2803)
15 ft. (4.57 m)								8,058 (3655)	8,058 (3655)	8,124 (3685)	7,008 (3179)
10 ft. (3.05 m)			14,710 (6672)	14,710 (6672)	11,244 (5100)	11,244 (5100)	9,691 (4396)	9,467 (4294)	8,954 (4062)		6,749 (3061)
5 ft. (1.52 m)			21,610 (9802)	19,867 (9012)	14,628 (6635)	12,796 (5804)	11,577 (5251)	8,909 (4041)	10,018 (4544)		6,446 (2924)
Ground Line			25,775 (11 691)	18,629 (8450)	17,393 (7889)	12,004 (5445)	13,288 (6027)	8,438 (3827)		10,722 (4863)	6,178 (2802)
-5 ft. (-1.52 m)	11,419 (5180)	11,419 (5180)	27,211 (12 343)	18,234 (8271)	19,028 (8631)	11,577 (5251)	14,130 (6409)	8,138 (3691)		10,537 (4780)	6,008 (2725)
-10 ft. (-3.05 m)	21,173 (9604)	21,173 (9604)	26,926 (12 214)	18,257 (8281)	19,459 (8827)	11,460 (5198)	14,018 (6359)	8,037 (3646)		10,527 (4775)	5,999 (2721)
-15 ft. (-4.57 m)	23,883 (10 833)	23,883 (10 833)	25,044 (11 360)	18,575 (8426)	18,510 (8396)	11,614 (5268)	14,014 (6357)	8,176 (3709)			
-20 ft. (-6.10 m)	28,705 (13 020)	28,705 (13 020)	20,713 (9395)	19,251 (8732)	15,119 (6858)	12,124 (5499)					

BUCKETS

A full line of buckets is offered to meet a wide variety of applications. The buckets have an adjustable bushing for side clearance, with the exception of the ditching bucket. Tooth selection includes either the John Deere Fanggs®, Standard, Tiger, Twin Tiger, Abrasion panel, or Flare tooth, or the ESCO (Vertalok) Standard, Tiger, Twin Tiger, or Flare tooth. Replaceable cutting edges are available through John Deere parts. Optional side cutters add 6 inches (150 mm) to bucket widths.

Type Bucket	Bucket Width		Bucket Capacity*		Weight		Bucket Dig Force		Arm Dig Force 10 ft. 2 in. (3.10 m)		Arm Dig Force 12 ft. 4 in. (3.75 m)		Bucket Tip Radius		No. Teeth
	in.	mm	cu. yd.	m³	lb.	kg	lb.	kN	lb.	kN	lb.	kN	in.	mm	
General-Purpose	24	600	0.95	0.73	1,453	659	33,500	149.2	24,700	110.0	21,600	96.0	62.5	1588	3
Plate Lip	30	750	1.20	0.92	1,731	785	33,500	149.2	24,700	110.0	21,600	96.0	62.5	1588	4
	36	900	1.48	1.13	1,845	836	33,500	149.2	24,700	110.0	21,600	96.0	62.5	1588	5
	42	1065	1.38	1.06	1,785	809	37,059	165.1	25,530	113.7	22,234	99.0	56.5	1435	5
	42	1065	1.75	1.34	1,966	891	33,500	149.2	24,700	110.0	21,600	96.0	62.5	1588	5
	48	1220	2.03	1.55	2,068	938	33,500	149.2	24,700	110.0	21,600	96.0	62.5	1588	6
Heavy-Duty Plate Lip	30	750	0.95	0.73	1,930	876	37,059	165.1	25,530	113.7	22,234	99.0	56.5	1435	4
	36	900	1.16	0.89	2,075	942	37,059	165.1	25,530	113.7	22,234	99.0	56.5	1435	5
	42	1065	1.38	1.06	2,195	997	37,059	165.1	25,530	113.7	22,234	99.0	56.5	1435	5
	48	1220	1.60	1.22	2,359	1071	37,059	165.1	25,530	113.7	22,234	99.0	56.5	1435	6
	54	1370	1.82	1.39	2,507	1138	37,059	165.1	25,530	113.7	22,234	99.0	56.5	1435	7
Heavy-Duty High Capacity	24	600	0.92	0.70	1,765	800	33,500	149.2	24,700	110.0	21,600	96.0	62.5	1588	3
	30	750	1.20	0.92	2,010	911	33,500	149.2	24,700	110.0	21,600	96.0	62.5	1588	4
	36	900	1.48	1.13	2,133	967	33,500	149.2	24,700	110.0	21,600	96.0	62.5	1588	4
	42	1065	1.75	1.34	2,279	1033	33,500	149.2	24,700	110.0	21,600	96.0	62.5	1588	5
Severe-Duty Cast Lip	36	900	1.16	0.89	1,921	871	38,420	171.1	25,820	115.0	22,453	100.0	54.5	1384	5
	42	1065	1.38	1.06	2,119	961	38,420	171.1	25,820	115.0	22,453	100.0	54.5	1384	6
Severe-Duty Plate Lip	30	750	0.95	0.73	2,080	943	37,059	165.1	25,530	113.7	22,234	99.0	56.5	1435	4
	36	900	1.16	0.89	2,179	988	37,059	165.1	25,530	113.7	22,234	99.0	56.5	1435	4
	42	1065	1.38	1.06	2,345	1063	37,059	165.1	25,530	113.7	22,234	99.0	56.5	1435	5
Ditching	60	1500	1.34	1.02	1,562	708	44,552	198.4	26,965	120.1	23,317	103.9	47.0	1194	0
	72	1800	1.66	1.27	1,759	797	44,552	198.4	26,965	120.1	23,317	103.9	47.0	1194	0

*All capacities are SAE heaped ratings.

BUCKET SELECTION CHART

Material (loose weight)	General-Purpose Bucket*	Heavy-Duty Bucket*
Wood chips – 700 lb./cu. yd. (420 kg/m³)	8.0 cu. yd. (6.2 m³)	—
Peat, dry – 750 lb./cu. yd. (440 kg/m³)	7.0 cu. yd. (5.4 m³)	—
Cinders – 950 lb./cu. yd. (560 kg/m³)	5.0 cu. yd. (3.9 m³)	—
Peat, wet – 1,170 lb./cu. yd. (690 kg/m³)	4.5 cu. yd. (3.5 m³)	—
Topsoil – 1,600 lb./cu. yd. (950 kg/m³)	3.25 cu. yd. (2.5 m³)	—
Coal – 1,780 lb./cu. yd. (1050 kg/m³)	3.25 cu. yd. (2.5 m³)	—
Caliche – 2,100 lb./cu. yd. (1250 kg/m³)	1.5 to 2.0 cu. yd. (1.2 to 1.5 m³)	1.25 to 2.0 cu. yd. (1.0 to 1.5 m³)
Earth, loam – 2,100 lb./cu. yd. (1250 kg/m³)	2.25 cu. yd. (1.7 m³)	2.0 cu. yd. (1.5 m³)
Shale – 2,250 lb./cu. yd. (1330 kg/m³)	2.25 cu. yd. (1.7 m³)	2.0 cu. yd. (1.5 m³)
Sand, dry – 2,400 lb./cu. yd. (1420 kg/m³)	2.25 cu. yd. (1.7 m³)	2.0 cu. yd. (1.5 m³)
Clay, dry – 2,500 lb./cu. yd. (1480 kg/m³)	1.5 to 2.0 cu. yd. (1.2 to 1.5 m³)	1.75 cu. yd. (1.3 m³)
Earth, dry – 2,550 lb./cu. yd. (1510 kg/m³)	1.5 to 2.0 cu. yd. (1.2 to 1.5 m³)	1.75 cu. yd. (1.3 m³)
Limestone, broken or crushed – 2,600 lb./cu. yd. (1540 kg/m³)	1.5 to 2.0 cu. yd. (1.2 to 1.5 m³)	1.38 to 1.75 cu. yd. (1.1 to 1.3 m³)
Earth, wet – 2,700 lb./cu. yd. (1600 kg/m³)	2.0 cu. yd. (1.5 m³)	1.75 cu. yd. (1.3 m³)
Clay, wet – 2,800 lb./cu. yd. (1660 kg/m³)	2.0 cu. yd. (1.5 m³)	1.75 cu. yd. (1.3 m³)
Rock, granite, blasted and broken – 2,800 lb./cu. yd. (1660 kg/m³)	1.75 to 2.0 cu. yd. (1.3 to 1.5 m³)	1.5 to 1.75 cu. yd. (1.2 to 1.3 m³)
Sand, moist – 2,850 lb./cu. yd. (1690 kg/m³)	2.0 cu. yd. (1.5 m³)	1.75 cu. yd. (1.3 m³)
Sand and gravel, dry – 2,900 lb./cu. yd. (1720 kg/m³)	2.0 cu. yd. (1.5 m³)	1.75 cu. yd. (1.3 m³)
Sand, wet – 3,100 lb./cu. yd. (1840 kg/m³)	1.75 cu. yd. (1.3 m³)	1.63 cu. yd. (1.2 m³)
Sand and gravel, wet – 3,400 lb./cu. yd. (2020 kg/m³)	1.75 cu. yd. (1.3 m³)	1.63 cu. yd. (1.2 m³)

*Contact your John Deere dealer for optimum bucket and attachment selections. These recommendations are for general conditions and average use. Larger buckets may be possible for flat and level operations, less compacted materials, and volume loading applications such as mass excavation applications in ideal conditions. Smaller buckets are recommended for adverse conditions such as off-level applications and uneven surfaces. Bucket capacity indicated is SAE heaped.

	792D		792D		792D
ENGINE					
Auto-idle system	●	Right- and left-hand mirrors	●	Interior light	●
Coolant recovery tank	●	Toolbox	●	Mode selectors	●
Dual element dry-type air filter with dust unloader valve	●	Vandal locks with ignition key	●	Power modes – three	●
Electric ether starting aid	●	Cab door	●	Travel modes – two	●
Enclosed fan guard	●	Fuel cap	●	Monitor system with alarm features	●
Conforms to SAE J1308	●	Service doors	●	Auto-idle indicator light	●
Engine coolant to –34°F (–37°C)	●	Toolbox	●	Engine air cleaner restriction indicator light	●
Engine oil cooler	●	FRONT ATTACHMENTS		Engine coolant level indicator light	●
John Deere quick release fuel filter	●	Arm, 10 ft. 2 in. (3.10 m)	■	Engine coolant temperature indicator light with audible alarm	●
Oil filter, vertical, spin on	●	Arm, 12 ft. 4 in. (3.75 m)	■	Engine oil pressure indicator light with audible alarm	●
Radiator trash screen	●	Bucket-to-arm clearance adjustable bushing (except ditching bucket)	●	Hydraulic oil level indicator light	●
Turbocharger	●	Centralized lubrication system for boom and arm	●	Low alternator charge indicator light	●
Underhood muffler with vertical curved end exhaust stack	●	Dirt seals on all bucket pins	●	Low fuel indicator light	●
Water separator	●	No-boom-arm option	●	Work-lights-on indicator light	●
HYDRAULIC SYSTEM		Boom cylinders with plumbing to mainframe for no-boom-arm option	●	Motion alarm with cancel switch	●
Auxiliary valve section	●	Bucket quick couplers	●	Conforms to SAE J994	●
Hydraulic oil cooler in front of radiator	●	Buckets	●	Positive-position hand throttle	●
Hydraulic pilot controls with industry standard pattern	●	General purpose	●	Propel pedals and levers	●
Hydraulic reservoir sight gauge	●	Heavy duty	■	Seat belt, 2 in. (51 mm)	●
Auxiliary pilot controls, electric	■	High capacity	■	Sliding right-hand window	●
Auxiliary pilot controls, hydraulic	■	Side cutters and teeth	■	Tinted glass	●
Hydraulic filter restriction indicator kit	■	OPERATOR'S STATION		Air conditioning (field installed)	■
UNDERCARRIAGE		Ashtray	●	Defroster fan	■
Adjustable track tension	●	Built-in Operator's Manual storage compartment and manual	●	Window vandal protection covers	■
Planetary final drive	●	Cigarette lighter	●	24- to 12-volt D.C. radio convertors	■
Single flange lower track rollers (9 per side)	●	Deluxe cloth seat with adjustable armrests	●	ELECTRICAL	
Track guides, front idler and center	●	Digital clock	●	Alternator, 45 amp	●
Triple grouser shoes, 24 in. (600 mm)	●	Front windshield wiper	●	24-volt system	●
Triple grouser shoes, 32 in. (800 mm)	■	Gauges	●	Batteries (two 12 volt), 180-min. reserve capacity	●
Two-speed propel	●	Engine coolant temperature	●	By-pass start safety cover on starter	●
Upper carrier rollers (2 per side)	●	Fuel level	●	Glass fuses	●
UPPERSTRUCTURE		Heater, 13,500 Btu/hr (4.1 kW) with blower fan	●	Positive terminal battery covers	●
Fuel tank sight gauge	●	Horn, electric	●	LIGHTS	
Fully-enclosed swing gear	●	Hourmeter, electric	●	Work lights	●
		Hydraulic shut-off lever	●	One mounted on boom	●
				One mounted on frame	●

KEY: ● Standard equipment ■ Optional or special equipment

See your John Deere dealer for further information.

THE JDAdvantEDGE

JDAdvantEdge is a wealth of support programs, parts systems, and dealer resources, all designed to give you the edge. This package of special benefits is a major reason why John Deere offers the “best value” for your equipment dollar.

Best parts support – Twelve regional parts depots in North America and others around the world put parts support near your job no matter where in the world it is.

A computerized FLASH™ parts locating system linking these depots to dealerships can find out-of-stock parts in a hurry and get them into your hands fast. Usually within 24 hours, across North America.

Best service backup – Dealer service technicians are regularly schooled, at our modern facility in Davenport, Iowa, or by professionals in the field, to diagnose quickly and repair efficiently.

If they're stumped, a phone call to DTAC (Dealer Technical Assistance Center) puts them in touch with a staff of pros at the factory who help them find a solution quickly.

Best dealers – Your John Deere dealer is an important contributor to the JDAdvantEdge. He or she is committed to being the best equipment supplier you can work with.

This is a dollars-and-cents commitment in parts inventory, in service facilities, in field-service trucks. It's a sweat-and-blood commitment in dedicated, skilled, and highly trained and motivated personnel in each and every department at the dealership.

But what sets John Deere dealers apart from all the rest is something more, a factor somewhat difficult to measure ... a caring attitude, and a sincere desire to be the best at meeting the needs of each individual customer.

John Deere Finance Plans – Whether you rent, lease, or buy John Deere equipment, your dealer can explain the John Deere options available. One-stop options that let you free up operating capital, keep other lines of credit open. More solid benefits of the JDAdvantEdge.

Best protection – In addition to the new equipment warranty that meets or exceeds the competition, SECURE® extended coverage, an optional service product for John Deere equipment, is available for repair coverage after the warranty concludes. Full machine or power train coverage is available for a variety of time periods to meet your needs. Consult your dealer for availability and details.



Net engine power is with standard equipment including air cleaner, exhaust system, alternator, and cooling fan, at standard conditions per SAE J1349 and DIN 6270B, using No. 2-D fuel at 35 API gravity. No derating is required up to 10,000 ft. (3050 m) altitude. Gross power is without cooling fan.

Specifications and design subject to change without notice. Wherever applicable, specifications are in accordance with PCSA and SAE standards. Except where otherwise noted, these specifications are based on a unit with 42-in. (1065 mm) 1.75-cu. yd. (1.34 m³) bucket, 32-in. (800 mm) triple grouser shoes, 12-ft. 4-in. (3.75 m) arm, full fuel tank, and 175-lb. (79 kg) operator.

